

ChamberTite Entry Boot Installation

FORECOURT
SOLUTIONS

Introduction

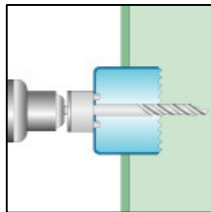
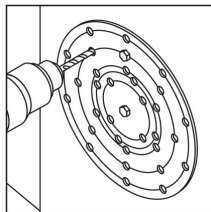
The Forecourt Solutions range of ChamberTite entry boots have been designed to provide a watertight seal for pipe and conduit entries passing through the wall of chambers and bulkheads.

Important:

- Read the installation Instructions first!
- Use the correct hole saw.
- The band clamp must be secured and all securing nuts installed and tightened in order to prevent water ingress.
- Angled pipe entries must not exceed 15° off centre. Pipe entries in excess of 15° could cause the boot to tear due to prolonged stress and can prevent the formation of a water tight seal.
- Keep all fibreglass cleaning solvents away from the entry boots.
- Incorrect installation will void product warranty!
- For further technical assistance please contact your local distributor or technical support at Forecourt Solutions. www.forecourtsolutionsltd.com.

Sump Preparation

1. Drill an 8 mm hole in the wall of the containment sump or bulkhead at the centre point of the desired pipe entry. Use the clamp ring or template to mark the position of the holes for securing the entry boot. Drill the mounting holes.
2. Using the correct hole saw as outlined in the table below, drill out the entry boot opening using the centre hole as a guide. De-burr the hole using sandpaper or de-burring tool to ensure there are no sharp edges to damage the boot.

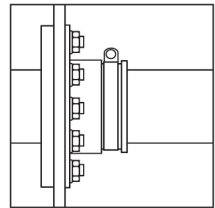
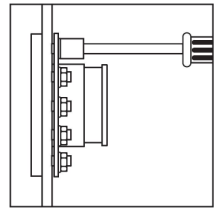
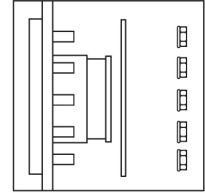


Part No.	Description	Application
HST-0238	2 3/8" Hole Saw	CTB-3150
HST-0425	4 1/4" Hole Saw	CTB-0150, CTB-0200, CTB-0300
HST-0550	5 1/2" Hole Saw	CTB-7450

Forecourt Solutions Ltd
Newton Ground
Petherton Road
North Newton
Somerset
TA7 0BD, UK

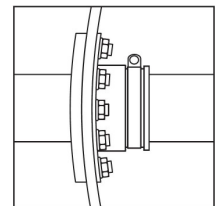
Boot Installation

1. Install the entry boot from the outside of the containment chamber or from the external side of the bulkhead by pushing the compression ring studs into the stud holes. From the inside, install the compression ring over the studs and hand tighten the securing nuts.
2. Use a suitably sized nut driver or spanner to tighten all the nuts evenly and firmly. Do not over tighten as this may cause deformation of the boot. If a torque wrench is used, the setting should be 6.7Nm.
3. Insert the appropriate sized pipe or conduit into the entry boot from the outside of the chamber. Water containing a little washing up liquid can be used as a lubricant if required.
4. Install the band clamp around the boot and tighten to 3.4 Nm.



Installation on Curved Surfaces

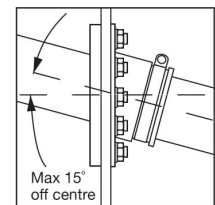
ChamberTite entry boots may be installed on to curved surfaces which have a diameter greater than 0.8m. The installation procedure is the same as described above, except that the 8mm bolt holes should be enlarged to 9mm. This is to allow the entry boot studs to move slightly inwards when tightening the nuts. Tighten each nut in stages so that the boot flange and compression ring can evenly form to the curved surface.



Installation of Angled Pipes

ChamberTite entry boots are able to accommodate angled entries of up to 15° off the centre line.

Note: Exceeding 15° could cause the rubber of the entry boot to tear due to prolonged stress.



T: +44 (0) 1278 661 268

F: +44 (0) 1278 661 268

E: info@forecourtsolutionsltd.com

W: www.forecourtsolutionsltd.com

Registered in England & Wales No:5669793

VAT Reg. No: 879 904263

